



Dear Parents and Caregivers,

I hope you all had a joyful Christmas and a restful break. A warm welcome back to Hollybush as we embark on our Discover Term. This term follows our Explore Term in the Autumn and will run until Easter. After Easter, we'll enter our Create Term. The Discover Term is an exciting opportunity for our children to step into the roles of Historians and Designers. Our curriculum at Hollybush is tailored to provide a deeper understanding of each subject, with a focus on developing curiosity and critical thinking. The three-term structure enables our students to engage in more meaningful, in-depth exploration of topics. As part of this approach, the children will explore key enquiry questions related to each subject. Some of the thought-provoking questions we'll be asking in History this term include:

- How dark were the Dark Ages?
- What did the Romans do for us?
- Will there ever be a world without war?

The children have all started to work hard on discovering the answers to these questions through research and the class learning journey's are already started to fill up with lots of work.

On Thursday 9th January we welcomed back Chris for our Freestyle Martial Arts workshop, it was a fantastic day and the children really enjoyed learning about the contemporary blend of four leading traditional martial art styles Karate, Taekwondo, Kung-Fu, and Kickboxing. Freestyle Martial Arts Hertford runs a club every Thursday at the Sele Community Centre at 6:30pm. The class is suitable for children ages 6 and up and also adults. They run a free taster class, please look on the [website to sign up](#).

Last weeks whole school assembly celebrated diversity and understanding that we might be similar to other people in our school community, or we might be very different, but we are all welcome at Hollybush and we are all part of a wonderful, diverse world. We have an assembly everyday at Hollybush. On a Monday, Mrs Noon leads a play assembly about our OPAL play, on a Tuesday we have reading assembly and Wednesday is sing and sign assembly. Thursday is 'Thoughtful Thursday' where we look at big questions related to online safety and PSHE. On a Friday, we discuss important themes related to our school values and British values. Mrs Botterman also leads RE assemblies on some Fridays. Visitors have commented on the excellent behaviour of our children in assemblies and we are very proud of the way our children demonstrate their super sitting and listen so carefully.

This week we say goodbye and good luck to Miss Gifford who is leaving us to join the Hollybush preschool, we look forward to continuing to work with her in the summer term when we work alongside the preschool as part of our transition. A huge thank you to Miss Gifford for her hard work in Nursery, the staff and the children will miss her very much.

Our new teachers have settled in very well and we are very excited about the term ahead.

I wish you a wonderful weekend.

Mrs. Cracknell

SAFE

We move around school in a safe manner. We follow instructions to keep ourselves safe. We keep hands, feet and unkind words to ourselves. We use equipment safely. We stay safe online. We talk to an adult if we feel unsafe.

READY

We wear correct uniform. We arrive at school on time. We have our equipment ready. We show that we are listening and ready to learn.

RESPECT

We listen when others speak and we respect the property of our friends and the school. We have an understanding of others cultures and beliefs. We respect that everyone have a right to learn.



Online Safety

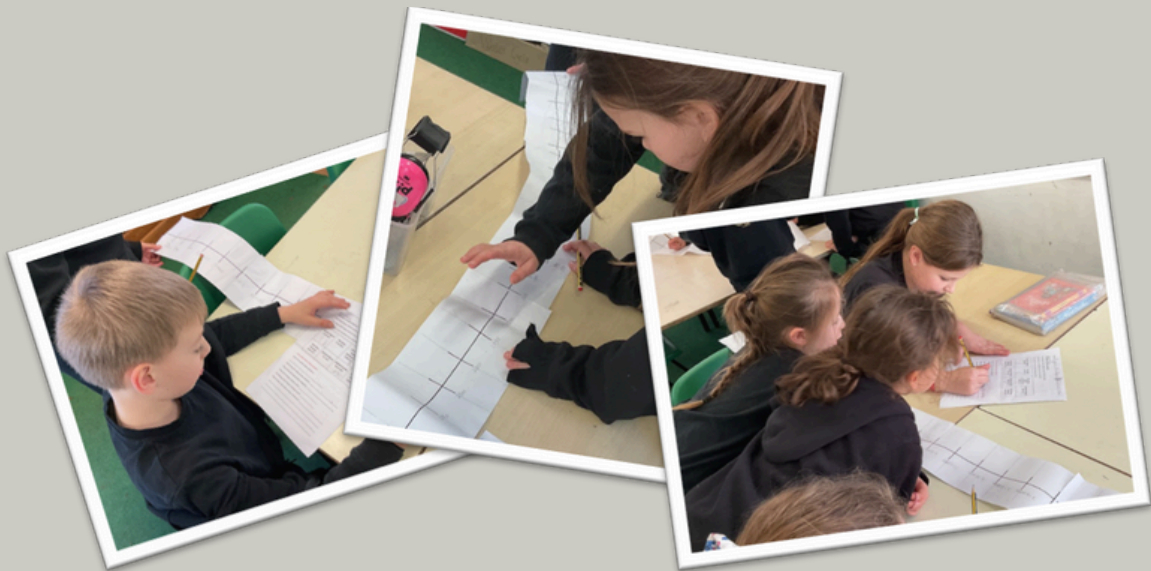
Christmas seems a distant memory now. It may be your child was fortunate enough to receive an **internet connected device**: a tablet, games console, toy, mobile phone or a smart watch or speaker. Please do check that any privacy settings have been turned on and you've spent time talking to your child about what to do if they come across something that worries them – perhaps an unkind text or nasty image.

As parents we want to make sure that our children feel that they can come and talk to us and not feel that they are in the wrong. There's a really helpful checklist called '**Tips for keeping your family safe**' on the [NSPCC website](#). Below is a screenshot. Each tip can be expanded and contains useful information. Make sure you are in control and the right parental controls have been set up. Also check the default settings which might include things like GPS location tracking, public WiFi and camera or chat access. Please turn these off so your child can't be identified.

Tips for keeping your family safe	
Do your research	+
Read safety instructions	+
Check apps and settings	+
Be careful with passwords	+
Set up parental controls	+
Switch off devices you're not using	+
Talk to your child	+

Year 4 Learning

It's been a busy start to the Spring term in Year 4. The children have really got stuck into their history topic on 'The ancient Romans'. In the last few lessons have been developing their understanding of chronology and how to order significant dates during the rise of the Roman civilization and then empire.



The children have enjoyed learning to develop computer code from written algorithms (a precise set of ordered instructions). This is as part of their new computing topic for this half-term called, 'Repetition in shapes'. The first two lessons have focused on programming an on-screen turtle.



NHS



PARENT WORKSHOP SLEEP TIGHT

Date: Tuesday 21st January 2025

Time: 9am-10am

**Location: Hollybush Primary
School**



We are offering a specialist parent workshop for parents/ carers of primary aged children. The workshop will focus on:

- The importance of sleep and understanding about sleep
- How we can help our children with sleep hygiene and healthy bedtime routines
- Strategies to help our children with bedtime and sleep routines

The workshop will run for approximately 1 hour and will be delivered by Educational Mental Health Practitioners from your Mental Health Support Team



Upcoming Events

2024
2025

January	
Monday 6th	Back to school
Thursday 9th	Martial arts day
Thursday 30th	Parent tour for Nursery 2025 at 10am

February	
Thursday 6th	EYFS play and stay
Friday 7th	Parent tour for Nursery 2025 at 10am
Wednesday 12th	Parent tour for Nursery 2025 at 2pm
Monday 17th - Friday 21st	Half term
Monday 24th	Inset day
Thursday 27th	Informal photo day



Clubs

Click on the club name for link to book

Matt's clubs can be booked via the office or by emailing
mattogilviecoaching@aol.com

MONDAY	<p><u>Rock Steady (during School day)</u> Reception - Story Club 12 - 12:30 pm - Sign up on Arbor KS2 - Drama club 12:30 - 1 pm - Sign up on Arbor Art club - https://www.jam-arts.com/book-online</p>
TUESDAY	<p>Year 1 - 6 Karate - 7:45 - 8:30 am</p> <p>Years 1 - 5 Multisports with Matt Ogilvie Coaching 3.15pm - 4.15pm</p>
THURSDAY	<p><u>Musical theatre - 12:30 - 1 pm - sign up on Arbor - Year 2 - 6</u> <u>Year 1 - 6 Dance Club 3.15pm - 4.15pm</u></p>
FRIDAY	<p>Ballet - 12:15 - 12:45 pm - sign up on Arbor - Reception and Year 1 Year 4 - 5 Football with Matt Ogilvie Coaching 3.15pm - 4.15pm <u>Year 1 - 6 East Herts Gymnastics 3.15pm - 4.15pm</u></p>

Uniform

- All items should be unbranded and without any logo's other than the Hollybush logo.
- Children should bring a suitable coat and a water bottle every day, whatever the weather. We are outside in all weathers!
- Hair longer than shoulder length must be tied up in a hair band in school colours.

Formal uniform

White polo shirt

Grey Trousers
Grey skirt
Grey pinafore
Grey shorts

Bottle green round necked jumper
Bottle green cardigan

Black shoes

White / black or grey socks

Active uniform

Black plain Tshirt
Black logo Tshirt
White plain Tshirt

Tshirts should be round necked not polo shirts

Black jersey tracksuit bottoms
Black jersey shorts
Black cycle shorts
Black skort
Black leggings

Black zip through hoodie
Black hooded jumper

Black plain trainers

Swimming

Swimming hats MUST be worn for swimming lessons.

UNIFORMS MUST NOT BE MIXED AND MATCHED!!

IF YOUR CHILD IS WEARING ACTIVE WEAR IT MUST BE WITH A ROUND NECKED T-SHIRT AND A BLACK HOODIE / ZIP UP

IF YOUR CHILD IS WEARING FORMAL WEAR IT MUST BE WITH A POLO TOP OR SHIRT AND A GREEN JUMPER

Reminders

School starts at 8:45am

Fordwich Rise Gate entrance

The drive gate opens at 8:40 for Nursery, Reception and Year 1. Siblings of children in these year's may also enter through this gate.

Welwyn Road Gate entrance

Children in Year 2 and above

If your child arrives after 8:45am they will need to enter via the Office and will be marked as Late.

HOLIDAYS & MEDICAL APPOINTMENTS

The School will not grant any leave of absence for holidays during term time unless there are exceptional circumstances. Holidays will otherwise be classed as unauthorised absence from school.

Non urgent appointments such as dentist & doctors appointments MUST be made outside of school hours where possible.

Outstanding debts

Please can parents ensure owed balances on meals, wrap around care and nursery session are cleared promptly.

Lunches

Please ensure you select your child's lunch via the Arbor app prior to 8am.

Pre selecting lunches is now compulsory

[Link to lunch menu on website](#)

Please do not park across the driveways of the houses neighbouring the school.

	PE	Swimming	Forest School
MONDAY	YEAR 1 YEAR 5		YEAR 1
TUESDAY	YEAR 1 YEAR 2 YEAR 3 YEAR 5 YEAR 6		
WEDNESDAY			YEAR 2
THURSDAY	YEAR 2 YEAR 4		NURSERY RECEPTION
FRIDAY	NURSERY RECEPTION YEAR 3 YEAR 4 YEAR 6		YEAR 3 YEAR 4

Check out our class pages for information on what your child is learning this Term!
[Link to Class Pages](#)

Type of query	Member of staff to contact
Safeguarding/child protection	Mrs Noon, Mrs Cracknell and Mrs Richardson
Any issues relating to your child or another child in the class	Email class teacher to arrange a meeting, sometimes a phase leader may join this meeting
If you do not feel the issue has been resolved or you may need more advice.	<p>Step 1 Phase Leader EYFS-Miss White KS1- Mrs Cracknell (until Feb 25) KS2-Mr Chandler</p> <p>Step 2 Deputy Headteacher- Mrs Cracknell</p> <p>Step 3 Headteacher- Mrs Noon</p>
Inclusion/ Special Educational Needs	Mrs Smail
Looked After and Previously Looked After Children	Mrs Cracknell
Payments/Finance	Miss Byrne Mrs Tilbury
Admissions	Miss Byrne
Complaints	Please refer to school complaints policy on the website .

Type of query	Member of staff to contact
Safeguarding/child protection	Mrs Noon, Mrs Cracknell and Mrs Richardson
Any issues relating to your child or another child in the class	Email class teacher to arrange a meeting, sometimes a phase leader may join this meeting
If you do not feel the issue has been resolved or you may need more advice.	<p>Step 1 Phase Leader EYFS-Miss White KS1- Mrs Cracknell (until Feb 25) KS2-Mr Chandler</p> <p>Step 2 Deputy Headteacher- Mrs Cracknell</p> <p>Step 3 Headteacher- Mrs Noon</p>
Inclusion/ Special Educational Needs	Mrs Smail
Looked After and Previously Looked After Children	Mrs Cracknell
Payments/Finance	Miss Byrne Mrs Tilbury
Admissions	Miss Byrne
Complaints	Please refer to school complaints policy on the website .

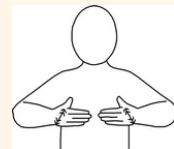
AT OUR SCHOOL WE FOLLOW HOLLYBUSH RULES

SAFE



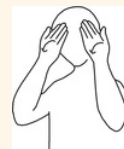
We move around school in a safe manner. We follow instructions to keep ourselves safe. We keep hands, feet and unkind words to ourselves. We use equipment safely. We stay safe online. We talk to an adult if we feel unsafe.

READY



We wear correct uniform. We arrive at school on time. We have our equipment ready. We show that we are listening and ready to learn.

RESPECT



We listen when others speak and we respect the property of our friends and the school. We have an understanding of others cultures and beliefs. We respect that everyone have a right to learn.

WE ARE LEARNING

THE HOLLYBUSH WAY



THE HOLLYBUSH WAY



Lovely Lining Up

We face forwards
We keep our hands to ourselves
We line up silently

Magical Manners

We say please and thank you
We say 'good morning'
We hold doors open for people
We knock before entering rooms
We say 'excuse me' before speaking to a grown up

Super Sitting

We sit calmly and sensibly
We keep our hands to ourselves
We face the adult
We use our magnet eyes (if we can)
We use our eager ears for listening to our adult

Wonderful Walking

We walk quietly
We walk sensibly
We face the direction we are walking in
We keep our hands to ourselves

Delightful Dinners

We use our Magical Manners
We use our Lovely lining up
We use our Wonderful walking
We use our Super sitting
We talk quietly with our friends

Peaceful Playtimes

We use our Wonderful walking to and from the classroom
We use our Magical Manners
We remember our school values