



Dear Parents and Carers,

EYFS and KS1 kicked off the day with a brilliant display of singing with Makaton signing for our harvest festival. Year 6 did an excellent job of presenting by sharing facts about harvest around the world. Our children embraced the school values of courage and excitement by performing to an audience, some of our children have only been in school for 6 weeks but that didn't stop them singing their hearts out. This afternoon, Year 6 performed their second production of the day, this time for the KS2 harvest. With classic assembly hits like 'Autumn Days and Cauliflowers Fluffy' many of us were transported back to our own times at school. We are very proud of all the children. We had such an excellent turn out of grandparents or other special people, thank you all so much for coming. Thank you also for all the donations for The Hertford Pantry.

Last week Year 6 (accompanied by Sarah and Mr Mallick) were having the time of their lives on their PGL. I am sure you saw the pictures on our Instagram, if you didn't, you can catch up on their adventures on the highlights on our Instagram page. You can find out more about what they were up to further down the newsletter.

You might remember Mrs Noon writing to you back in September about children bringing in items to celebrate our cultural diversity. Thank you so much for everything that you have sent in so far - we have seen some fascinating objects, writing and photos. If you still have things that you would be happy for us to borrow for a while, please could you let us have them by half term. As Mrs Noon said, we will do our very best to get everything back to you in perfect condition but please do not send in anything too precious or important to you or your family.

As you all know, things get very busy from now onwards! we have lots of opportunities for you to come into school, lots of trips and experiences for the children. Please do make a note of all the dates on page 5 of this newsletter. On Monday we look forward to welcoming you to our OPAL (Outside Play and Learning) come and play afternoon. This begins at 1:30pm and will continue until the end of the day, if you can't come for the whole session, do join us when you can. Our OPAL Co-ordinator Bethan will be here too, to talk to you all about OPAL before you get to be a part of it in action. We know the children are really looking forward to having you here and hope you can make it.

Wishing a wonderful weekend,  
Mrs Cracknell



**SAFE** 

We move around school in a safe manner. We follow instructions to keep ourselves safe. We keep hands, feet and unkind words to ourselves. We use equipment safely. We stay safe online. We talk to an adult if we feel unsafe.

**READY** 

We wear correct uniform. We arrive at school on time. We have our equipment ready. We show that we are listening and ready to learn.

**RESPECT** 

We listen when others speak and we respect the property of our friends and the school. We have an understanding of others cultures and beliefs. We respect that everyone have a right to learn.

 Kindness

 Generosity

 Excitement

 Learning together

 Enquiring minds

 Courage



*thip*  
the hertford pantry

THE HERTFORD PANTRY is delighted to open its doors and fill Hertford's kitchens!

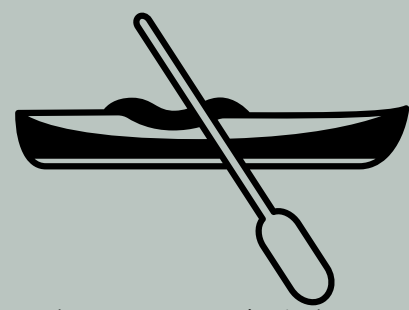
We welcome all to bring a bag and collect free food.

Help us to help each other and avoid food waste.

Open:  
Sat 11:00-12:00  
Mon 13:00-14:00  
Wed 13:30-14:30

Find us at  
The Sele Community Hub *Bring a bag*

# PGL



What a week that was! For someone who has never been on a residential trip before (and was anticipating it with no small amount of dread), I must say that I had the very best time at PGL with Year 6. It was so good to see the children getting out of their comfort zone and pushing themselves to achieve in ways they had never done before. The activities were well organised and engaging, giving the children a chance to support each other and work together in ways that have strengthened their bonds of friendship and brought them closer together as a class.

Our team leader, Jess, was so full of energy and enthusiasm and she was able to rouse the children to incredible heights despite the very early starts. The food was great and, along with the many snacks the children brought with them, gave us the energy we needed to complete the numerous challenges that we were given throughout the day. I was a big fan of canoeing even though the water was freezing, and the many climbing activities made me challenge myself and get over my own mild fear of heights, though I won't miss tightening numerous harnesses every day.

Despite the incredible range of activities and challenges, I must say that my favourite part of PGL was being with the children; seeing them overcome obstacles and learning about them as individuals was incredibly rewarding as well as incredibly tiring. Being with them from the early wake up through the activities to our bed time story in the corridor was a wonderful experience for all of us. The children, and my PGL wife Sarah, should feel extremely proud of everything they achieved.





All PGL photos are our school Instagram



Friends of Hollybush School  
present our first ever...



# YES DAY!

Friday  
25th October



Wear school uniform BUT  
make it your own by doing  
ANY or ALL of the following!

- Add a colourful t-shirt!
- Rock colourful socks or shoes!
- Use hair chalk!
- Have painted nails!
- Show off temporary tattoos!
- Style your hair in an unusual way!

Extra Yes moments to  
enjoy at school!

- Sit anywhere at registration!
- Bring a treat of your choice for break time!\*
- Enjoy a fun TV show in the afternoon!



\* A reminder that Hollybush  
is a nut free school



Any questions  
[HollybushPTA@Gmail.com](mailto:HollybushPTA@Gmail.com)

## Donations

We kindly suggest a £2 donation per pupil  
to join in the fun!

Payments can be via cash or card at the  
school gates in the morning.

# Upcoming Events

2024  
2025

## October

Monday 14th	Opal come and play
Friday 18th	Year 2 Scootability
Tuesday 22nd	Year 4 Pedestrian skills
Wednesday 23rd	Year 6 Cross country
Thursday 24th	Year 4 and 5 - Woodhall
Friday 25th	FOHS YES DAY
Friday 25th	Finish for half term 3pm

## November

Tuesday 4th	Year 1 phonics meeting
Wednesday 6th	Flu vaccinations Reception - Year 6
Friday 8th	Individual and sibling photos
Saturday 9th	Community morning
Tuesday 12th	Reception phonics meeting
Wednesday 13th	Cinema Trip 'If for Year 3 and 6
Thursday 14th	Nursery (9am) and reception (2:30pm) Nursery rhyme performance
Wednesday 20th	Cinema trip 'Harold and the purple crayon' for Years 4 and 5
Thursday 21st	Cinema trip 'Migration' for Reception  Movie Morning for Nursery and The Nest in school
Friday 22nd	Inset day
Wednesday 27th	Cinema trip 'Garfield' for Years 1 and 2
Thursday 28th	Explore term play and stay EYFS am Explore Afternoon years 1-6 pm
Friday 29th	FOHS Christmas Fayre

## December

Tuesday 3rd	Christingle PM (time tbc)
Wednesday 4th	Pantomime
Monday 9th	EYFS sing and sign - Nursery parents
Tuesday 10th	EYFS sing and sign - Reception parents
Wednesday 11th	Years 1 -3 Christmas play PM
Thursday 12th	Year 1 - 3 Christmas play AM
Monday 16th	Rock Steady Concert
Friday 20th	End of term 2pm finish

## January

Monday 6th	Back to school



# Clubs

Click on the club name for link to book

Matt's clubs can be booked via the office or by emailing  
mattogilviecoaching@aol.com

MONDAY	<p><u>Rock Steady (during School day)</u></p> <p>Reception - Story Club 12 - 12:30 pm - Sign up on Arbor KS2 - Drama club 12:30 - 1 pm - Sign up on Arbor</p>
TUESDAY	<p>Year 1 - 6 Karate - 7:45 - 8:30 am</p> <p>Year 1 - 3 Dodgeball with Matt Ogilvie Coaching 3.15pm - 4.15pm</p>
THURSDAY	<p>Musical theatre - 12:30 - 1 pm - sign up on Arbor - Year 2 - 6 (starts after half term)</p> <p><u>Year 1 - 6 Dance Club 3.15pm - 4.15pm</u></p>
FRIDAY	<p>Ballet - 12:15 - 12:45 pm - sign up on Arbor - Reception and Year 1 (starts after half term)</p> <p>Year 4 - 5 Football with Matt Ogilvie Coaching 3.15pm - 4.15pm</p> <p><u>Year 1 - 6 East Herts Gymnastics 3.15pm - 4.15pm</u></p>

# Uniform

- All items should be unbranded and without any logo's other than the Hollybush logo.
- Children should bring a suitable coat and a water bottle every day, whatever the weather. We are outside in all weathers!
- Hair longer than shoulder length must be tied up in a hair band in school colours.

## Formal uniform

White polo shirt

Grey Trousers  
Grey skirt  
Grey pinafore  
Grey shorts

Bottle green round necked jumper  
Bottle green cardigan

Black shoes

White / black or grey socks

## Active uniform

Black plain Tshirt  
Black logo Tshirt  
White plain Tshirt

Tshirts should be round necked not polo shirts

Black jersey tracksuit bottoms  
Black jersey shorts  
Black cycle shorts  
Black skort  
Black leggings

Black zip through hoodie  
Black hooded jumper

Black plain trainers

*UNIFORMS MUST NOT BE MIXED AND MATCHED!!*

*IF YOUR CHILD IS WEARING ACTIVE WEAR IT MUST BE WITH A ROUND NECKED T-SHIRT AND A BLACK HOODIE / ZIP UP*

*IF YOUR CHILD IS WEARING FORMAL WEAR IT MUST BE WITH A POLO TOP OR SHIRT AND A GREEN JUMPER*

## Swimming

Swimming hats **MUST** be worn for swimming lessons.

# Reminders

School starts at 8:45am

Fordwich Rise Gate entrance

The drive gate opens at 8:40 for Nursery, Reception and Year 1. Siblings of children in these year's may also enter through this gate.

Welwyn Road Gate entrance

Children in Year 2 and above

If your child arrives after 8:45am they will need to enter via the Office and will be marked as Late.

## HOLIDAYS & MEDICAL APPOINTMENTS

The School will not grant any leave of absence for holidays during term time unless there are exceptional circumstances. Holidays will otherwise be classed as unauthorised absence from school.

Non urgent appointments such as dentist & doctors appointments MUST be made outside of school hours where possible.

## Outstanding debts

Please can parents ensure owed balances on meals, wrap around care and nursery session are cleared promptly.

## Lunches

Please ensure you select your child's lunch via the Arbor app prior to 8am.

Pre selecting lunches is now compulsory

[Link to lunch menu on website](#)

Please do not park across the driveways of the houses neighbouring the school.

	PE	Swimming	Forest School
<b>MONDAY</b>	YEAR 1 YEAR 5		YEAR 1
<b>TUESDAY</b>	YEAR 1 YEAR 2 YEAR 3 YEAR 5 YEAR 6		
<b>WEDNESDAY</b>			YEAR 2
<b>THURSDAY</b>	YEAR 2 YEAR 4		NURSERY YEAR 6
<b>FRIDAY</b>	NURSERY RECEPTION YEAR 3 YEAR 4 YEAR 6		YEAR 3 YEAR 4

Check out our class pages for information on what your child is learning this Term!  
[Link to Class Pages](#)

Type of query	Member of staff to contact
Safeguarding/child protection	Mrs Noon and Mrs Cracknell
Any issues relating to your child or another child in the class	Email class teacher to arrange a meeting, sometimes a phase leader may join this meeting
If you do not feel the issue has been resolved or you may need more advice.	<p><b>Step 1</b> Phase Leader EYFS-Ms Neville KS1- Miss Parry KS2-Mr Chandler</p> <p><b>Step 2</b> Deputy Headteacher- Mrs Cracknell</p> <p><b>Step 3</b> Headteacher- Mrs Noon</p>
Inclusion/ Special Educational Needs	Mrs Smail
Payments/Finance	Miss Byrne Mrs Tilbury
Admissions	Miss Byrne
Complaints	Please refer to school complaints policy on the <a href="#">website</a> .

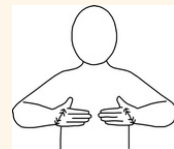
# AT OUR SCHOOL WE FOLLOW HOLLYBUSH RULES

## SAFE



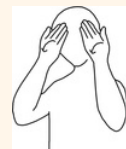
We move around school in a safe manner. We follow instructions to keep ourselves safe. We keep hands, feet and unkind words to ourselves. We use equipment safely. We stay safe online. We talk to an adult if we feel unsafe.

## READY



We wear correct uniform. We arrive at school on time. We have our equipment ready. We show that we are listening and ready to learn.

## RESPECT



We listen when others speak and we respect the property of our friends and the school. We have an understanding of others cultures and beliefs. We respect that everyone have a right to learn.

# WE ARE LEARNING

# THE HOLLYBUSH WAY



## THE HOLLYBUSH WAY



### Lovely Lining Up

We face forwards  
We keep our hands to ourselves  
We line up silently

### Magical Manners

We say please and thank you  
We say 'good morning'  
We hold doors open for people  
We knock before entering rooms  
We say 'excuse me' before speaking to a grown up

### Super Sitting

We sit calmly and sensibly  
We keep our hands to ourselves  
We face the adult  
We use our magnet eyes (if we can)  
We use our eager ears for listening to our adult

### Wonderful Walking

We walk quietly  
We walk sensibly  
We face the direction we are walking in  
We keep our hands to ourselves

### Delightful Dinners

We use our Magical Manners  
We use our Lovely lining up  
We use our Wonderful walking  
We use our Super sitting  
We talk quietly with our friends

### Peaceful Playtimes

We use our Wonderful walking to and from the classroom  
We use our Magical Manners  
We remember our school values